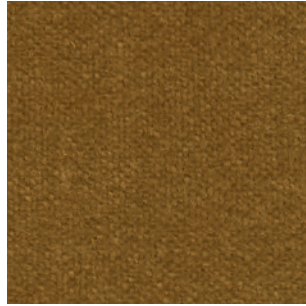


Avalon 2

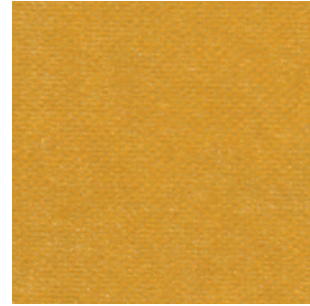
SAHCO



021



050



049



025



004



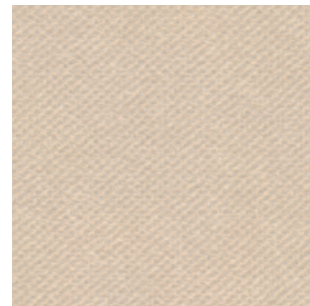
007



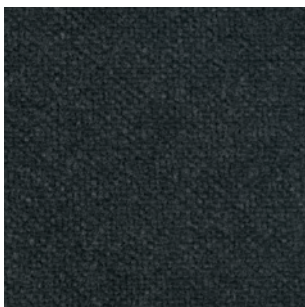
040



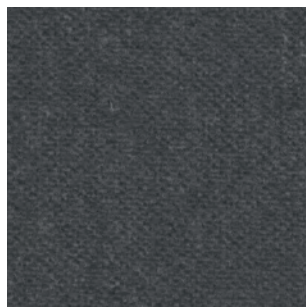
023



006



003



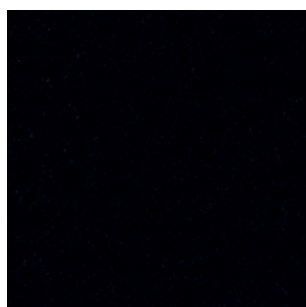
043



041



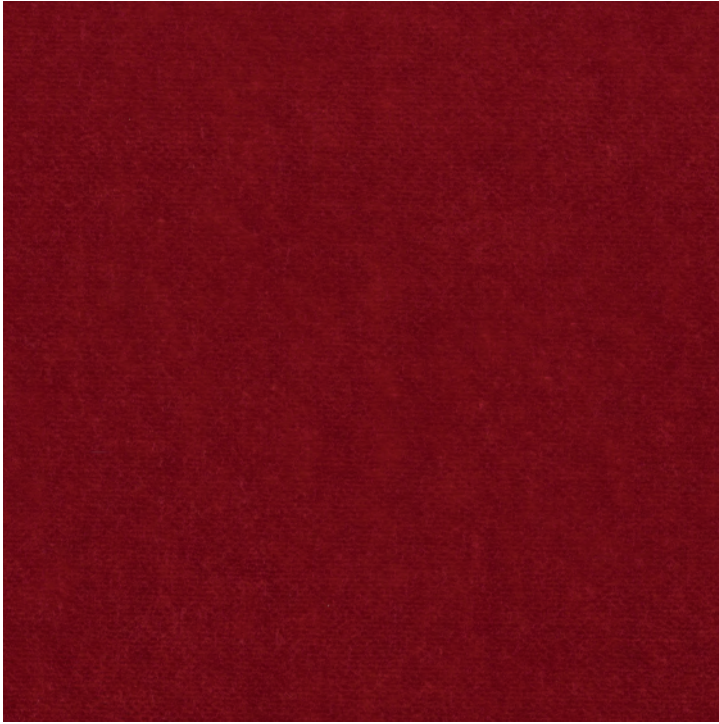
005



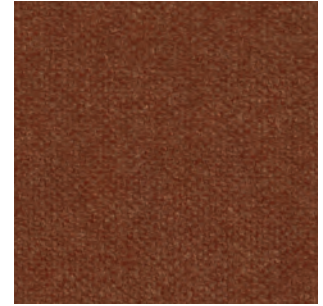
044



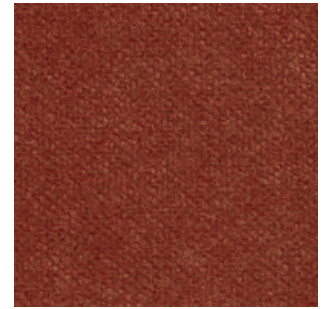
042



059



012



011



052



051



015



027



048



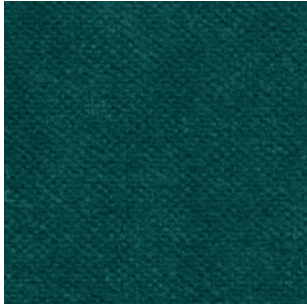
026



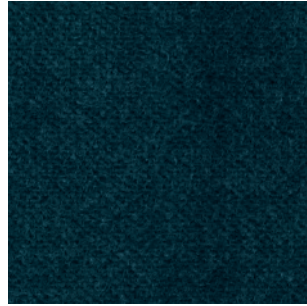
017



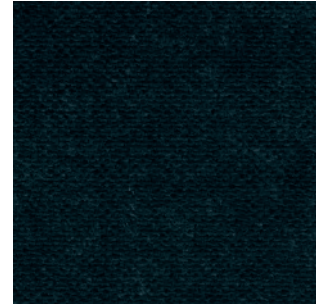
002



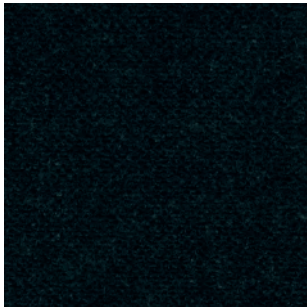
057



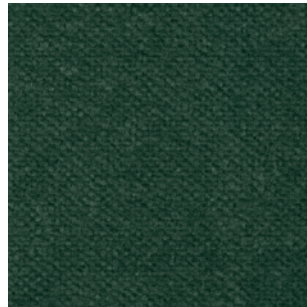
054



034



058



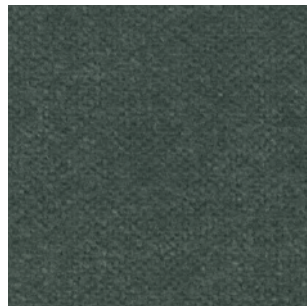
055



056



038



035



022



047



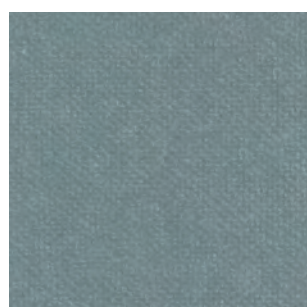
046



001



045



053

Avalon 2

DK

Anvendelse Polstring

Beskrivelse 100% Trevira CS.

Bredde 140 cm / 55 in. Vægt 720 g/lbm

Testning Lysægthed 5-6 (ISO 1-8). Pilling 4-5

(ISO 1-5). Slidstyrke: 100.000 Martindale.

Krympning ca. 1%. Flammesikring: BS 5852

Crib 5. DIN 4102 B1. EN 1021-1/2.

IMO FTP Code 2010 Part 8. NF P 92 507 M1.

UNI 9175 IIM

Vedligeholdelse Se ISO symboler

UK/US

Application Upholstery

Description 100% Trevira CS. Width 140 cm /

55 in. Weight 720 g/lm 25oz/sq

Tests Lightfastness 5-6 (ISO 1-8). Pilling 4-5

(ISO 1-5). Durability 100.000 Martindale.

Shrinkage ca. 1%. Flame resistance BS 5852

Crib 5. DIN 4102 B1. EN 1021-1/2.

IMO FTP Code 2010 Part 8. NF P 92 507 M1.

UNI 9175 IIM

Care Please see the ISO symbols

DE

Anwendungsbereich Bezugsstoff

Beschreibung 100% Trevira CS.

Breite 140 cm / 55 in. Gewicht 720 g/lfd. Meter

Testergebnisse Lichtechtheit 5-6 (ISO 1-8).

Pilling 4-5 (ISO 1-5). Scheuertouren 100.000

Martindale. Einlaufquote ca. 1%. Flammenschutz

BS 5852 Crib 5. DIN 4102 B1. EN 1021-1/2.

IMO FTP Code 2010 Part 8. NF P 92 507 M1.

UNI 9175 IIM

Pflege Siehe ISO Pflegesymbole

NL

Toepassing Bekleding stof

Omschrijving 100% Trevira CS.

Hoogte 140 cm / 55 in. Gewicht 720 gr/str.m

Testgegevens Lichtechtheid 5-6 (ISO 1-8).

Pilling 4-5 (ISO 1-5). Durability 100.000

Martindale. Washbelading ca. 1%.

Vlamvertragendheid BS 5852 Crib 5. DIN 4102

B1. EN 1021-1/2. IMO FTP Code 2010 Part 8.

NF P 92 507 M1. UNI 9175 IIM

Onderhoud Zie de ISO symbolen

FR

Domaine d'utilisation Tissu d'ameublement

Composition 100% Trevira CS.

Largeur 140 cm / 55 in. Poids 720 g/ml

Tests Résistance à la lumière 5-6 (ISO 1-8).

Résistance au frottement 4-5 (ISO 1-5).

Résistance à l'abrasion 100.000 Martindale.

Rétrécissement env. 1%. Normes au feu

BS 5852 Crib 5. DIN 4102 B1. EN 1021-1/2.

IMO FTP Code 2010 Part 8. NF P 92 507 M1.

UNI 9175 IIM

Entretien Voir les symboles ISO

IT

Destinazione d'uso Tessuti per tappezzeria

Caratteristiche 100% Trevira CS.

Larghezza 140 cm / 55 in. Peso 720 gr/mtl

Test Resistenza alla luce 5-6 (ISO 1-8). Pilling

4-5 (ISO 1-5). Abrasione 100.000 Martindale.

Restringimento circa 1%. Ignifugazione

BS 5852 Crib 5. DIN 4102 B1. EN 1021-1/2.

IMO FTP Code 2010 Part 8. NF P 92 507 M1.

UNI 9175 IIM

Manutenzione Per favore seguire simboli ISO

ES

Aplicación Tapicería

Descripción 100% Trevira CS.

Anchura 140 cm / 55 in. Peso 720 gr/ml

Pruebas Resistencia a la luz 5-6 (ISO 1-8).

Relleno 4-5 (ISO 1-5). Resistencia al desgaste

100.000 Martindale. Encogimiento aprox. 1%.

Resistencia al fuego BS 5852 Crib 5. DIN 4102

B1. EN 1021-1/2. IMO FTP Code 2010 Part 8.

NF P 92 507 M1. UNI 9175 IIM

Mantenimiento Consulte los símbolos ISO

JP

用途 室内装飾用テキスタイル、

組成 トレビラ CS 100%。幅 140 cm / 55 インチ。

重さ 720 g/lin.m

テスト 耐光性 5-6 (ISO 1-8)。ピリング 4-5 (ISO

1-5)。耐久性 マーチンデール値 - 100,000。収縮 約

1%。難燃性 BS 5852 Crib 5. DIN 4102 B1。

EN 1021-1/2. IMO FTP Code 2010 Part 8。

NF P 92 507 M1. UNI 9175 IIM

ケア 詳細は、ISO認証をご覧ください

CN

应用 软装面料

成分 100% 德国阻燃丝 (Trevira CS)

幅宽 140 cm / 55 in 克重 720 g/lin.m,

耐磨指数 耐光性 5-6 (ISO 1-8)。抗起球度 4-5

(ISO 1-5)。耐久度 100,000 次马丁代尔摩擦实验

(Martindale)。缩水率 大约 1%。阻燃 BS 5852

Crib 5. DIN 4102 B1. EN 1021-1/2. IMO

FTP Code 2010 Part 8. NF P 92 507 M1。

UNI 9175 IIM

维护 请参阅ISO符号



Contact and further information www.sahco.com

Quality and environmental system accreditation according to ISO 9001 and ISO 14001

Encouraging the use of suitable fibres. Durable and high quality. Hazardous substances restricted.

In accordance with California AB2998 or similar regulation in other states of North America, this product should not be used for residential upholstery in USA.